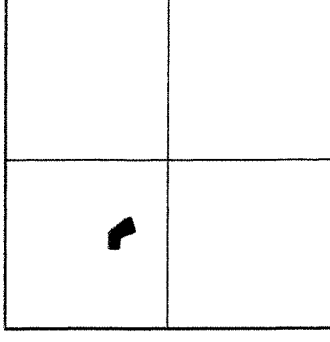


1 Inch = 60 Feet

PREPARED BY: JEREMY A. WOLBRINK, R.L.S.
2100 NORTH SANBORN BLVD. - P.O. BOX 398
MITCHELL, SOUTH DAKOTA 57301
PHONE: (605) 996-7761

COORDINATE SYSTEM IS SOUTH DAKOTA SOUTH ZONE.
STATE PLANE - NORTH AMERICAN
DATUM 1983 - GEOID 12B.
GRID BEARINGS AND GROUND DISTANCES ARE SHOWN.

NOTE: THIS SURVEY WAS PERFORMED WITHOUT THE BENEFIT OF THE RECORD TITLE COMMITMENT EASEMENTS OF RECORD. THESE COMMITMENTS OF RECORD WERE NOT RESEARCHED AND ARE NOT SHOWN UNLESS OTHERWISE NOTED.



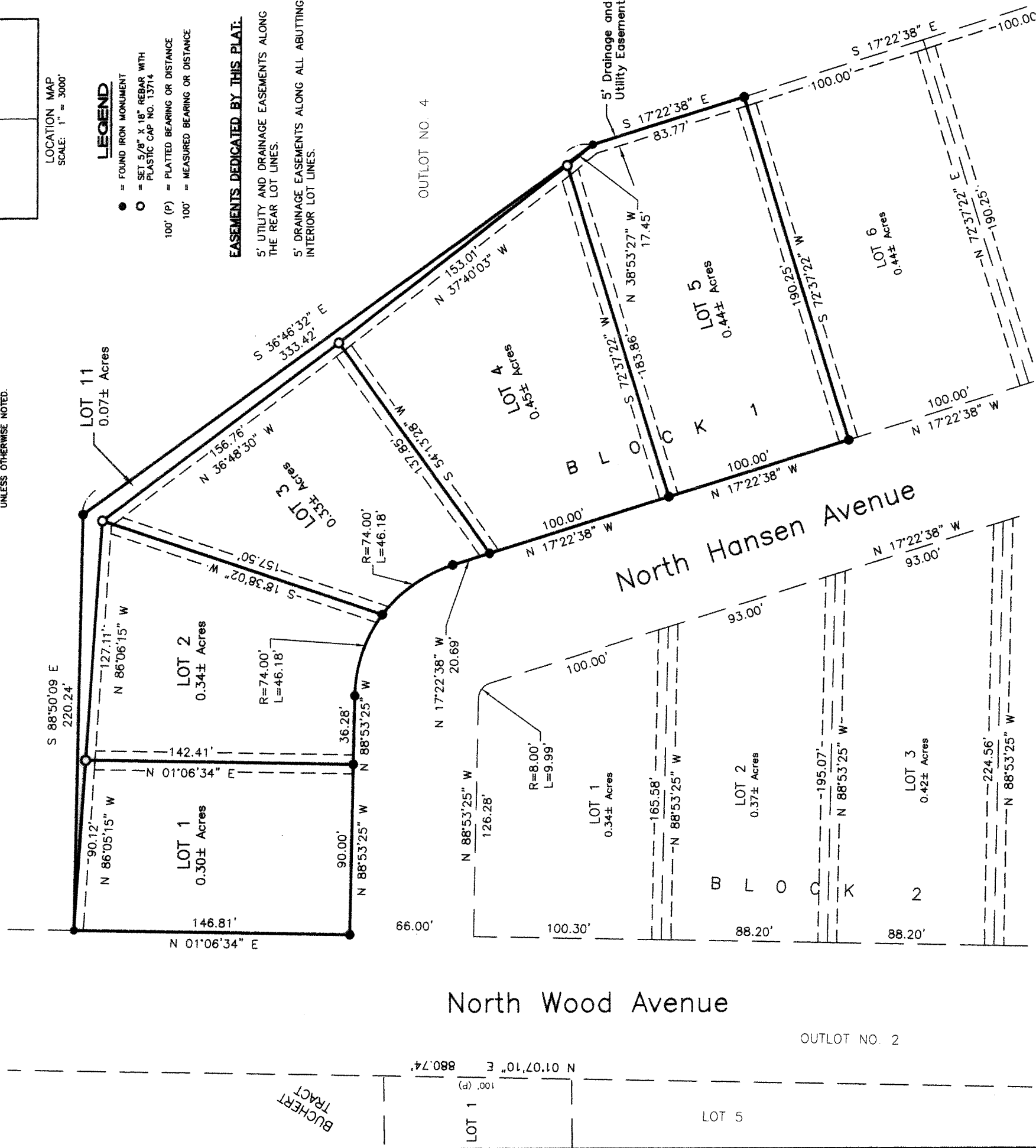
LOCATION MAP
SCALE: 1" = 3000'

LEGEND

- = FOUND IRON MONUMENT
- = SET 5/8" X 18" REBAR WITH PLASTIC CAP NO. 13714
- 100' (P) = PLATTED BEARING OR DISTANCE
- 100' = MEASURED BEARING OR DISTANCE

EASEMENTS DEDICATED BY THIS PLAT:

- 5' UTILITY AND DRAINAGE EASEMENTS ALONG THE REAR LOT LINES.
- 5' DRAINAGE EASEMENTS ALONG ALL ABUTTING INTERIOR LOT LINES.



A PLAT OF LOTS 1, 2, 3, 4, 5 AND 11, BLOCK 1 OF KROETCH ADDITION, A REPLAT OF LOTS 1, 2, 3, 4 AND 5, BLOCK 1 OF KROETCH ADDITION IN THE S 1/2 OF THE NW 1/4 OF SECTION 13, T 1 N, R 20 E OF THE BLACK HILLS MERIDIAN, CITY OF PHILIP, HAAKON COUNTY, SOUTH DAKOTA

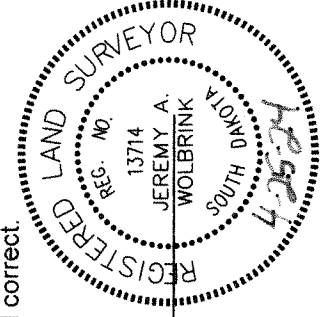
SURVEYOR'S CERTIFICATE

I, Jeremy A. Wolbrink, the undersigned, do hereby certify that I am a Registered Land Surveyor in and for the State of South Dakota. At the request of the City of Philip, South Dakota, a South Dakota municipal corporation, as owner, and under its direction for purposes indicated therein, I did on or prior to April 23, 2024, survey those parcels of land described as follows: LOTS 1, 2, 3, 4, 5 and 11, BLOCK 1 OF KROETCH ADDITION, A REPLAT OF LOTS 1, 2, 3, 4 AND 5, BLOCK 1 OF KROETCH ADDITION IN THE S 1/2 OF THE NW 1/4 OF SECTION 13, T 1 N, R 20 E OF THE BLACK HILLS MERIDIAN, CITY OF PHILIP, HAAKON COUNTY, SOUTH DAKOTA.

This plat does hereby vacate previously platted LOTS 1, 2, 3, 4 AND 5, BLOCK 1, AND THE PREVIOUSLY DEDICATED EASEMENTS LYING WITHIN SAID LOTS, OF KROETCH ADDITION IN THE S 1/2 OF THE NW 1/4 OF SECTION 13, T 1 N, R 20 E OF THE BLACK HILLS MERIDIAN, CITY OF PHILIP, HAAKON COUNTY, SOUTH DAKOTA, AS RECORDED IN CABINET A OF PLATS ON PAGE 194.

In my professional opinion and to the best of my knowledge, information and belief, the within and foregoing plat is true and correct.

Dated this 25TH day of APRIL, 2024.



Jeremy A. Wolbrink
Registered Land Surveyor #SD13714

SPN

& Associates
Engineers, Planners and Surveyors
2100 North Sanborn Blvd. - P.O. Box 398 Mitchell, South Dakota 57301
Phone: (605) 996-7761 Fax: (605) 996-0015

A PLAT OF LOTS 1, 2, 3, 4, 5 AND 11, BLOCK 1 OF KROETCH ADDITION, A REPLAT OF LOTS 1, 2, 3, 4 AND 5, BLOCK 1 OF KROETCH ADDITION IN THE S 1/2 OF THE NW 1/4 OF SECTION 13, T 1 N, R 20 E OF THE BLACK HILLS MERIDIAN, CITY OF PHILIP, HAAKON COUNTY, SOUTH DAKOTA

OWNER'S CERTIFICATE

KNOW ALL MEN BY THESE PRESENTS that the City of Philip, South Dakota, a South Dakota municipal corporation, hereby certifies that it is the absolute and unqualified owner of all of the land included in the within and foregoing plat; the plat is of a parcel of ground located in PREVIOUSLY PLATTED LOTS 1, 2, 3, 4 AND 5, BLOCK 1 OF KROETCH ADDITION IN THE S 1/2 OF THE NW 1/4 OF SECTION 13, T 1 N, R 20 E OF THE BLACK HILLS MERIDIAN, CITY OF PHILIP, HAAKON COUNTY, SOUTH DAKOTA; that the plat has been made at the request of the City of Philip, South Dakota, a South Dakota municipal corporation, and under its direction for the purposes indicated therein; which said property as so surveyed and platted shall hereafter be known as LOTS 1, 2, 3, 4, 5 and 11, BLOCK 1 OF KROETCH ADDITION, A REPLAT OF LOTS 1, 2, 3, 4 AND 5, BLOCK 1 OF KROETCH ADDITION IN THE S 1/2 OF THE NW 1/4 OF SECTION 13, T 1 N, R 20 E OF THE BLACK HILLS MERIDIAN, CITY OF PHILIP, HAAKON COUNTY, SOUTH DAKOTA, as shown by this plat; and the City of Philip, South Dakota, a South Dakota municipal corporation, hereby dedicates to the public, for public use forever as such, the streets and alleys, if any, as shown and marked on said plat; and that development of the land included within the boundaries of said Lots 1, 2, 3, 4, 5 and 11, Block 1, shall conform to all existing applicable zoning, subdivision, and erosion and sediment control regulations.

This plat does hereby vacate previously platted LOTS 1, 2, 3, 4 AND 5, BLOCK 1, AND THE PREVIOUSLY DEDICATED EASEMENTS LYING WITHIN SAID LOTS, OF KROETCH ADDITION IN THE S 1/2 OF THE NW 1/4 OF SECTION 13, T 1 N, R 20 E OF THE BLACK HILLS MERIDIAN, CITY OF PHILIP, HAAKON COUNTY, SOUTH DAKOTA, AS RECORDED IN CABINET A OF PLATS ON PAGE 194.

IN WITNESS WHEREOF, I have hereunto set my hand this _____ day of _____, 2024.

The City of Philip, South Dakota, a South Dakota municipal corporation

Brit Miller, Mayor

CORPORATION ACKNOWLEDGMENT

STATE OF SOUTH DAKOTA))
COUNTY OF HAAKON)

On this, the _____ day of _____, 2024, before me, _____, the undersigned officer, personally appeared Brit Miller, of the City of Philip, South Dakota, a South Dakota municipal corporation, and that he, as such Mayor, being authorized so to do, executed the foregoing instrument for the purposes therein contained, by signing the name of the municipal corporation by himself as Mayor.

IN WITNESS WHEREOF, I hereunto set my hand and official seal.

Notary Public, South Dakota
My Commission Expires: _____

RESOLUTION OF CITY PLANNING COMMISSION

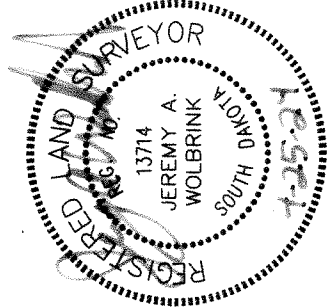
WHEREAS, the plat of LOTS 1, 2, 3, 4, 5 and 11, BLOCK 1 OF KROETCH ADDITION, A REPLAT OF LOTS 1, 2, 3, 4 AND 5, BLOCK 1 OF KROETCH ADDITION IN THE S 1/2 OF THE NW 1/4 OF SECTION 13, T 1 N, R 20 E OF THE BLACK HILLS MERIDIAN, CITY OF PHILIP, HAAKON COUNTY, SOUTH DAKOTA, prepared by Jeremy A. Wolbrink, duly licensed Land Surveyor in and for the State of South Dakota, heretofore filed in the office of the City Finance Officer of Philip, South Dakota, has been submitted to the City Planning Commission of the said City of Philip, South Dakota; and

WHEREAS, the City Planning Commission, in regular meeting assembled, had duly considered said plat and finds as a fact that said plat is in conformity and does not conflict with the Master Plan for the City of Philip, South Dakota, heretofore adopted by this Commission;

NOW THEREFORE, be it resolved by the City Planning Commission of Philip, South Dakota, that the plat of LOTS 1, 2, 3, 4, 5 and 11, BLOCK 1 OF KROETCH ADDITION, A REPLAT OF LOTS 1, 2, 3, 4 AND 5, BLOCK 1 OF KROETCH ADDITION IN THE S 1/2 OF THE NW 1/4 OF SECTION 13, T 1 N, R 20 E OF THE BLACK HILLS MERIDIAN, CITY OF PHILIP, HAAKON COUNTY, SOUTH DAKOTA, prepared by Jeremy A. Wolbrink, a Land Surveyor, be and the same is hereby approved and its adoption by the City Council of the City of Philip, South Dakota, is hereby recommended.

The undersigned hereby certifies that the foregoing resolution was passed by the City Planning Commission of Philip, South Dakota, at a meeting thereof held on the _____ day of _____, 2024.

Chairperson/Vice-Chairperson of Philip City Planning Commission



SPN

& Associates
Engineers, Planners and Surveyors
2100 North Sanborn Blvd. - P.O. Box 398 Mitchell, South Dakota 57301
Phone: (605) 996-7761 Fax: (605) 996-0015

A PLAT OF LOTS 1, 2, 3, 4, 5 AND 11, BLOCK 1 OF KROETCH ADDITION, A REPLAT OF LOTS 1, 2, 3, 4 AND 5, BLOCK 1 OF KROETCH ADDITION IN THE S 1/2 OF THE NW 1/4 OF SECTION 13, T 1 N, R 20 E OF THE BLACK HILLS MERIDIAN, CITY OF PHILIP, HAAKON COUNTY, SOUTH DAKOTA

RESOLUTION OF CITY COUNCIL

WHEREAS, it appears that the City Planning Commission of the City of Philip, South Dakota, did duly consider and did recommend the approval and adoption of the hereinafter described plat, at its meeting held on the _____ day of _____, 2024; and WHEREAS, it appears from an examination of the plat of LOTS 1, 2, 3, 4, 5 and 11, BLOCK 1 OF KROETCH ADDITION, A REPLAT OF LOTS 1, 2, 3, 4 AND 5, BLOCK 1 OF KROETCH ADDITION IN THE S 1/2 OF THE NW 1/4 OF SECTION 13, T 1 N, R 20 E OF THE BLACK HILLS MERIDIAN, CITY OF PHILIP, HAAKON COUNTY, SOUTH DAKOTA, as prepared by Jeremy A. Wolbrink, a duly licensed Land Surveyor in and for the State of South Dakota, that said plat is in accordance with the system of streets and alleys set forth in the Master Plan adopted by the City Planning Commission of the City of Philip, South Dakota, and that such plat has been prepared according to law; THEREFORE, be it resolved by the City Council of Philip, South Dakota, that the plat of LOTS 1, 2, 3, 4, 5 and 11, BLOCK 1 OF KROETCH ADDITION, A REPLAT OF LOTS 1, 2, 3, 4 AND 5, BLOCK 1 OF KROETCH ADDITION IN THE S 1/2 OF THE NW 1/4 OF SECTION 13, T 1 N, R 20 E OF THE BLACK HILLS MERIDIAN, CITY OF PHILIP, HAAKON COUNTY, SOUTH DAKOTA, prepared by Jeremy A. Wolbrink, be and the same is hereby approved and the description set forth therein and the accompanying surveyor's certificate shall prevail. The undersigned hereby certifies that the foregoing resolution was passed by the City of Philip, South Dakota, at a meeting held on the _____ day of _____, 2024.

Finance Officer/Deputy Finance Officer of City of Philip

CERTIFICATE OF COUNTY TREASURER

I hereby certify that all taxes which would, if not paid, be liens upon any of the land included in the within and foregoing plat, as shown by the records of my office, have been fully paid.

Treasurer/Deputy Treasurer, Haakon County Date _____

DIRECTOR OF EQUALIZATION

I hereby certify that a copy of the plat of LOTS 1, 2, 3, 4, 5 and 11, BLOCK 1 OF KROETCH ADDITION, A REPLAT OF LOTS 1, 2, 3, 4 AND 5, BLOCK 1 OF KROETCH ADDITION IN THE S 1/2 OF THE NW 1/4 OF SECTION 13, T 1 N, R 20 E OF THE BLACK HILLS MERIDIAN, CITY OF PHILIP, HAAKON COUNTY, SOUTH DAKOTA, has been received by me and is filed in my office.

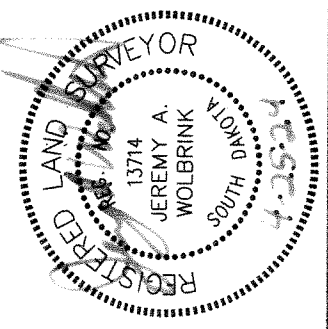
Director of Equalization/Deputy Director of Equalization, Haakon County Date _____

REGISTER OF DEEDS

STATE OF SOUTH DAKOTA)
)SS
COUNTY OF HAAKON)

FILED for record this _____ day of _____, 2024, at _____, and recorded in Cabinet _____ of Plats on Page _____ therein.

Register of Deeds, Haakon County By _____ Deputy



SPN & Associates
Engineers, Planners and Surveyors
2100 North Saaborn Blvd. - P.O. Box 398 Mitchell, South Dakota 57301
Phone: (605) 996-7761 Fax: (605) 996-0015